

gmeUniversity™

Creating a Continuous Learning
Environment for Residency Programs

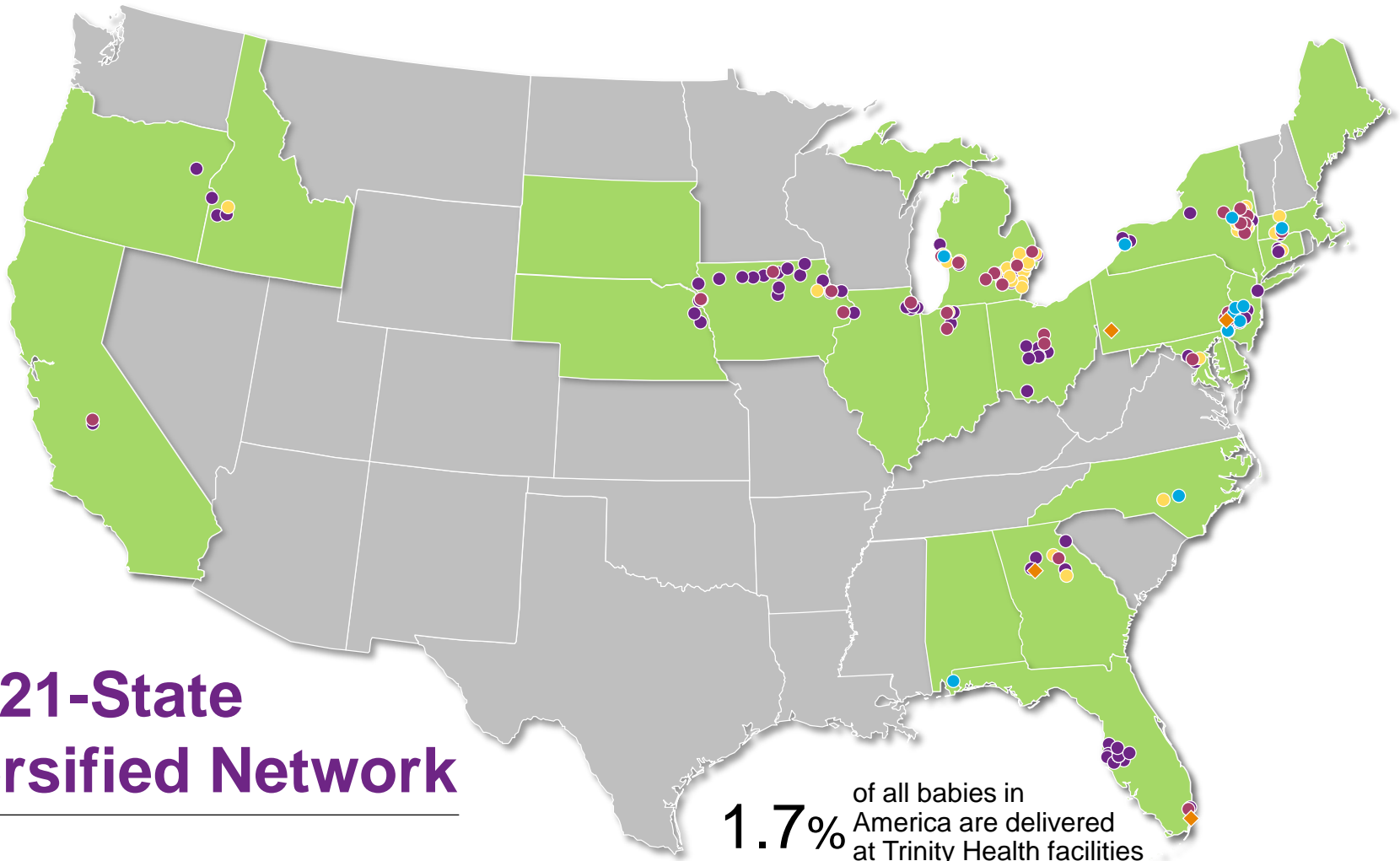
- Peter Coggan, MD MSEd
Vice President and Chief
Academic Officer
cogganp@trinity-health.org
- Debi Kellogg, Director,
Graduate Medical Education,
UCO
debi.kellogg@trinity-ealth.org



Trinity Health

Livonia, MI





Our 21-State Diversified Network

● **90** Hospitals* in 21 Regional Health Ministries**

+ ◆ **4** Mission Health Ministries

1.7% of all babies in America are delivered at Trinity Health facilities

3 National Health Ministries***

23,900 Affiliated Physicians

● **49** Home Care & Hospice Locations Serving 116 Counties

● **14** PACE Center Locations

● **61** Continuing Care Facilities

3,900 Employed Physicians

*Owned, managed or in JOAs or JVs.

**Operations are organized into Regional Health Ministries ("RHMs"), each an operating division which maintains a governing body with managerial oversight subject to authorities.

***Includes multiple locations for Trinity Home Health Services, Trinity Senior Living Communities and PACE facilities.

We Have Significant Population Health Expertise in Our System Today

2 Insurance Plans

27 ACOs in 20 RHM*s*

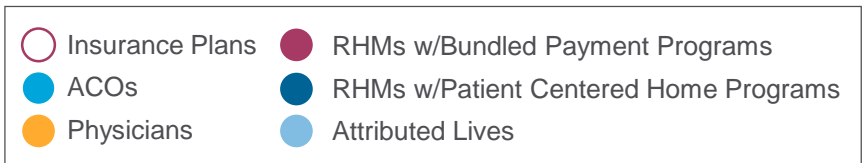
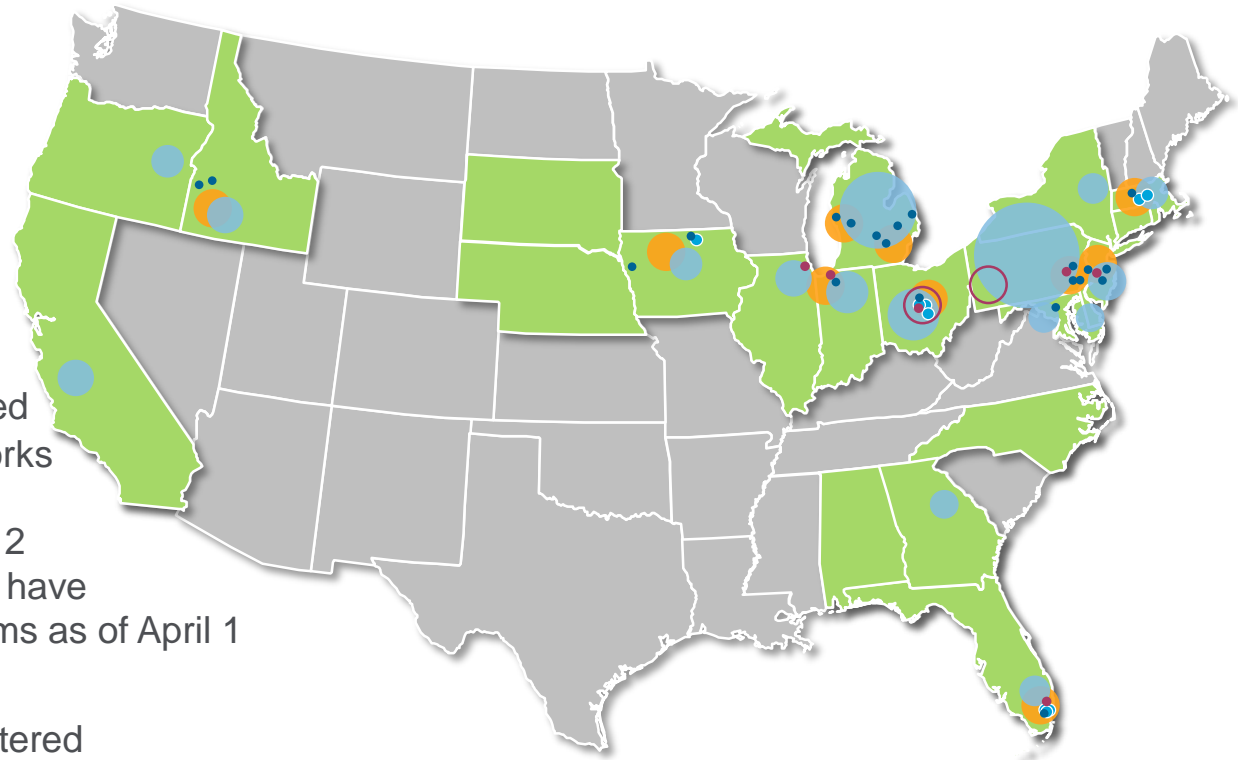
10,677

Physicians & Advanced Practice Professionals Committed to 16 Clinically Integrated Networks

47 Facilities (35 hospitals & 12 Continuing Care facilities) have Bundled Payment Programs as of April 1

20 RHMs with 65 Patient-Centered Medical Home Programs

1.3M Attributed Lives, through 61 Risk- or Value-Based Reimbursement Programs



What Problem Are We Trying To Solve?

- Develop a sense of GME Community
- Facilitate communication
- Promote consistent message
- Share best practices
- Access expertise around the system
- Create a single source of GME truth

What Does The GME Community Look Like?

- Approximately 2,000 residents are being trained across the Trinity Health System.
- 31 Teaching Hospitals-ranging from rural to a large academic medical center.
- Training in 184 different specialties
- More than 200 MD and DO programs
- Like programs need to combine their resources and talents. (i.e. 13 FM residencies and 19 IM)

How Did This All Start?

- Inquiry from a Program Director
- Consider Blackboard, Moodle?
- Contacted Talent Development for ideas
- Worked the Program Director and DME to develop the vision

So we decided to develop our own solution using the JIVE platform.

Our Vision for **gmeUniversity**™

Learn, Share and Collaborate

Unite the Trinity Health residencies through learning, sharing and Collaboration.

1

Continuous Learning

Enable a continuous learning environment where colleagues learn, share and transfer knowledge and break down information silos within our organization and across our residency programs

2

Connect and Share to Improve Patient Care

Accelerate the rate at which we can share knowledge and best practices to improve patient care by using technology to collaborate any time, at any place, with faculty and fellow residents

3

Real-Time Collaboration and Problem-Solving

Create an environment of innovation that fosters real-time collaboration and problem-solving across all residencies

Welcome to gmeU!

The logo for gmeUniversity features the word "gme" in purple and "University" in green. A small white graduation cap icon is positioned between the "e" and "U". A trademark symbol (TM) is located to the right of "University".

gmeUniversity™

Learn. Share. Collaborate.

gmeUniversity™ Solution

- A social/informal learning environment for approximately 1500 residents in residency programs across Trinity Health using a combination of Jive and WebEx with a structured architecture including:
 - General GME Community Site for all programs
 - Ministry-specific GME Sites
 - Program-specific pages (i.e. Internal Medicine) and courses/rotations within the ministry site

Features

Launch virtual training “synchronous” sessions directly from the community for training events

Leverage and share stored educational content, such as articles, videos, recorded lectures, TED Talks, YouTube videos

Share learning across the system with just-in-time performance support and best practice stories between ministries

Track “asynchronous” virtual learning activities such as: discussions, journal clubs, didactic sessions

What does it look like?

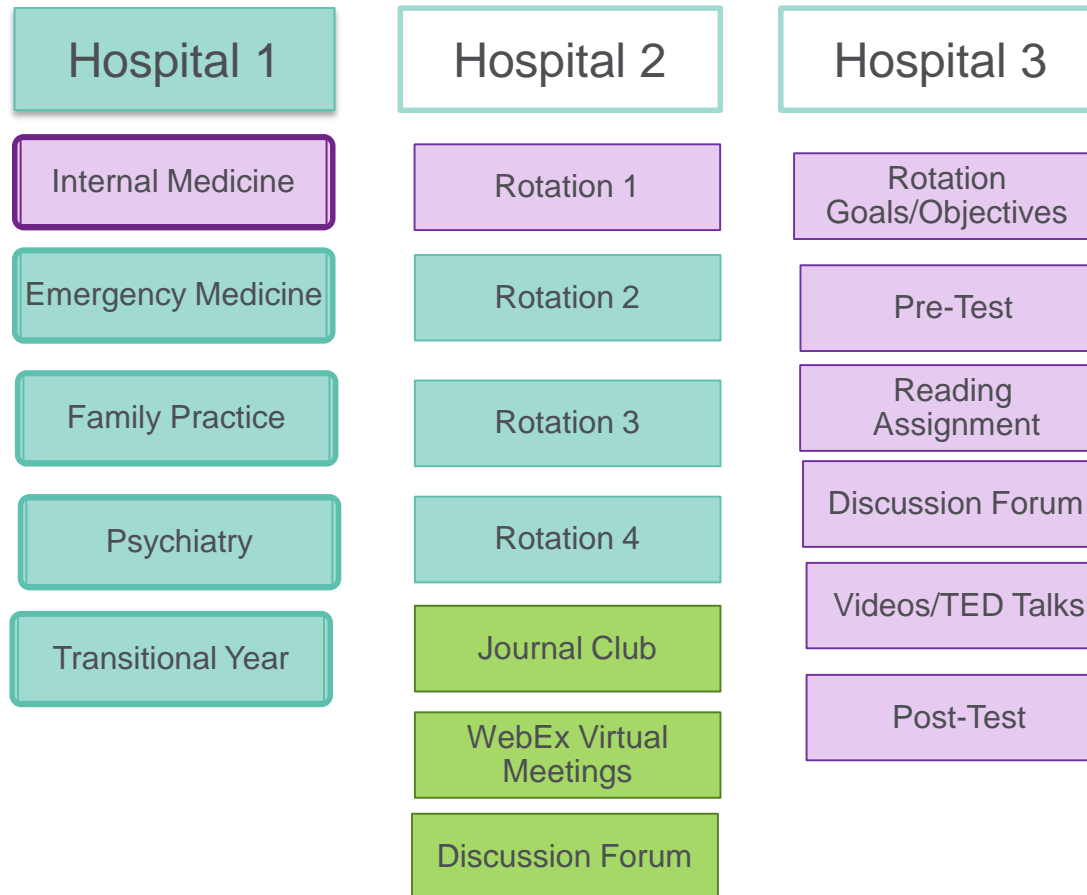
The screenshot shows the gmeUniversity website interface. At the top, there is a dark purple header with the text "Learn. Share. Collaborate." and the "gmeUniversity" logo. A navigation menu includes "Overview", "Content", "People", "Subspaces and Projects", "Reports", and "Calendar". On the right side of the header, it says "Following in 2 streams". Below the header, there are several sections: "Find your Hospital" with a dropdown menu showing "St. Mary Mercy Livonia"; "GME CALENDAR" with a date selector for "5/7/2015" and a link for "Beta Launch of gmeUniversity!"; a central video player showing a "Welcome to gmeUniversity" video with the tagline "Learn. Share. Collaborate." and a duration of "2:22"; "ASK GMEUNIVERSITY" with a text input field and an "Ask it" button; and "DISCUSSION FORUM" with two links: "First Glance at our Innovations Poster" and "Provide Feedback on gmeUniversity".

<http://trinityhealth.healthstreamvideo.com/medias/eb0359pl33>

At-a-Glance Structure

gmeUniversity

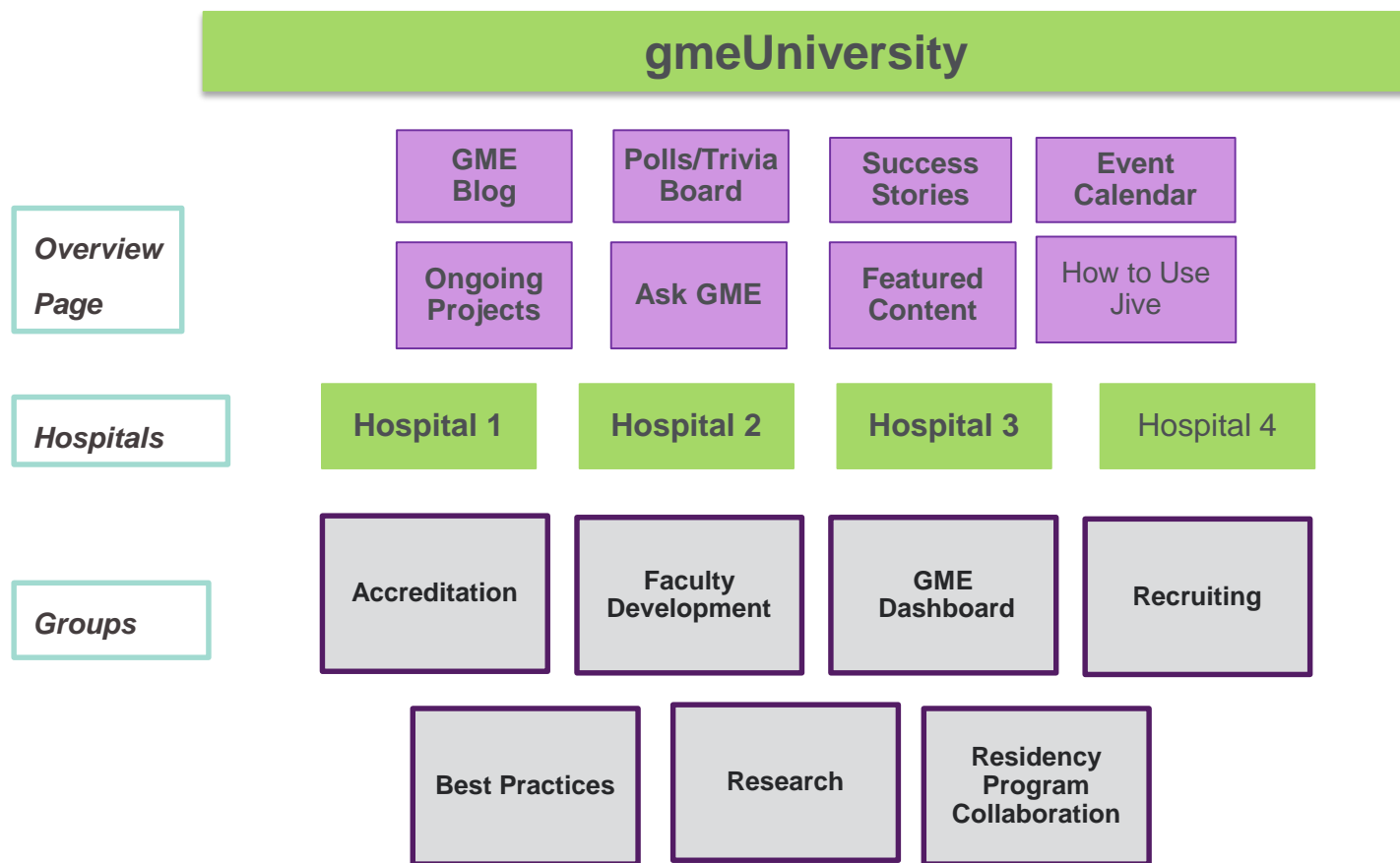
Shared Collaboration Groups by Topic Area



This structure and format would be replicated across all RHM Residency Programs at Trinity Health.



Overall Architecture – Main GME Home Page



Overview Page at System Level

Space: gmeUniversity | Trinity Health Uniting Community - Internet Explorer

https://uniting.trinity-health.org/community/gm

File Edit View Favorites Tools Help

Share Browser WebEx

home Combined GME Lect... Inbox (1,231) - debikellogg... Internal Medicine Planning for Sustainability Sophia Tolli - Bridal » Styl... space GME Virtual Universi... Suggested Sites TRINITY HEALTH. WebEx En...

Conference Call Meeting
7/17/2015
ACGME Internal Medicine
RRC Meeting Agenda Close
Date

COLLABORATION GROUPS

gmeU Internal
Medicine
Program
Directors

LATEST POLL

Previous Next More polls

What Faculty development
topic do you want to see
content for?

Please indicate your choice

Assessment and Evaluation
of the Resident

The problem resident

AOA transition to ACGME

Other - Please leave a
comment

Vote

Created by Debi Kellogg on Mar
20, 2015 in gmeUniversity

14 Votes - 2 Comments

Click the Faculty or Resident Getting Started button below.

Faculty
Getting Started Guide

Resident
Getting Started Guide

How would you like to Learn, Share and Collaborate?

ACCREDITATION
Learn about
accreditation
resources for GME
programs

BEST PRACTICES
Learn about best
practices in GME

COLLABORATION
Collaborate with
faculty and program
directors across the
system

FACULTY
DEVELOPMENT
Develop your skills
as a faculty member

RECRUITING
Connect with
recruiting teams to
grow your career

RESEARCH
Learn about GME
research across the
system

RESOURCES
Leverage GME
resources on a
variety of topics

GME BLOG

Medscape: Residents' Salary & Debt Report
18 hours ago in gmeUniversity by Sandra Swanson

Despite Advance Directive Gains, End-Of-Life Cancer Care More Intense
7 days ago in gmeUniversity by Debi Kellogg

How Do You Contribute To The Patient Experience of Care Pain Management Score?
3 weeks ago in gmeUniversity by Debi Kellogg

Attention Internal Medicine Programs: Be part of the Board Prep System Research Trial at Mercy Chicago
1 month ago in gmeUniversity by Debi Kellogg

GME Summit – October 1 & 2, 2015 – Novi, MI
3 days ago in gmeUniversity by Angela Vos

perspective on CPR ring true
for you?

As as faculty member do you
feel resilience or burnout?
What can we do to teach
residents self-care skills?

Fellowship Programs?

What do you want to be able
to do on this site?

QUANTIA MD

Learn about Quantia MD - a
great resource for residents for
learning and research!

Quantia MD
with Dr. Peter Coggan

IMPORTANT LINKS

AOA Transition to ACGME
Accreditation

Tell us how we are doing

Provide Feedback on gmeU

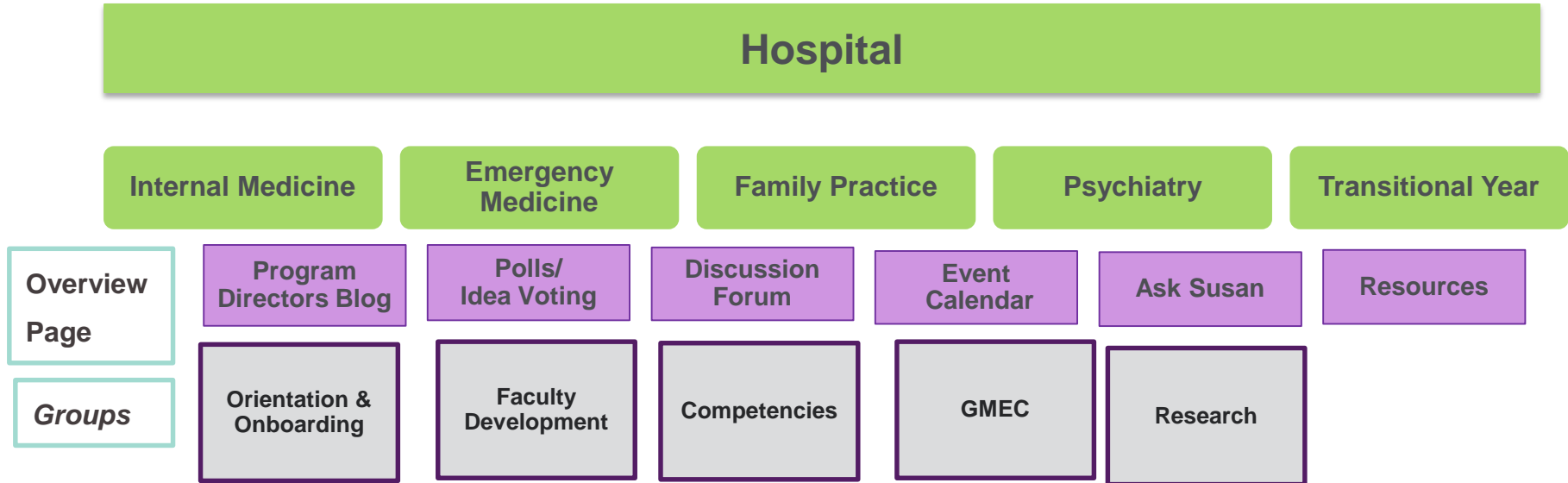
How to Use Jive

Collaboration U
(Jive Help)

75%

8:33 AM
7/30/2015

Hospital Level Architecture



This structure and format would be replicated across all RHM Residency Programs at Trinity Health.

Hospital (RHM) Level Overview Page

The screenshot shows a web browser window with the URL <https://uniting.trinity-h...>. The browser's address bar shows the page title "Space: St. Mary Mercy Liv...". The browser's menu bar includes "File", "Edit", "View", "Favorites", "Tools", and "Help". The browser's toolbar includes "Share Browser" and "WebEx".

The main content area features a "Customize" button at the top left. Below it is a "Find your Program" section with two buttons: "SMMH Internal Medicine" and "SMMH Transitional Year". To the left of the main content is a "GROUPS" sidebar with five items: "SMMH GME Research", "SMMH GME Orientation", "SMMH Internal Medicine All Faculty", "SMMH Faculty Resources", and "SMMH General Competencies".

The central content area is titled "Welcome to St. Mary Mercy Livonia GME Community". It features a video player with a play button. Below the video is a "Welcome" message: "Welcome to the St. Mary Mercy Livonia learning community for gmeUniversity. On this page, you can access learning communities for all SMMH residents and faculty, and enter in to your program communities as well. The residency programs at St. Mary Mercy Livonia are: Internal Medicine, Podiatry, Emergency Medicine, Family Medicine, Psychiatry, Transitional Year, and Internship. In each of the learning communities you join, you will be able to learn from your faculty and fellow residents, share resources, and collaborate on projects. Welcome to our community - jump in and get started. If you haven't seen the Getting Started guide, click on the button below to see how to use gmeUniversity." Below the message is an "Introduce Yourself and Get Started" section with three buttons: "Faculty Getting Started Guide", "Resident Getting Started Guide", and "Introduce Yourself".

Below the "Introduce Yourself and Get Started" section is a "FEATURED CONTENT" section with two items: "So what is wrong with using Google Docs or Dropbox for file sharing in the health care setting?" (21 hours ago) and "Report Cards and Benchmarking: Value Based Purchasing" (5 months ago), both by Susan Greenwood-Clark.

On the right side of the page, there are three sections: "ASK SUSAN IN THE GME OFFICE" with a "Type your question" input field and an "Ask it" button; "RECENT QUESTIONS" with a "Filter by Categories & Tags" dropdown and two questions: "RE: Why we need to do tech assessments before using IT vendors - File Sharing" and "RE: What material would you like to see in the gmeU?"; and "IMPORTANT LINKS" with a list of links: "New Innovations", "Ethics Course", "AACH Communication Webinars", "Welcome to the Knowledge Learning Management System".

The browser's status bar at the bottom shows "Slide 11 of 14 - 'Trinity Health PowerPoint Template'". The taskbar at the bottom includes the Start button, Internet Explorer, File Explorer, and several application icons.

Program Page Architecture (Internal Medicine)

Overview
Page

Program
Director
Blog

Polls

Resources

Event
Calendar

Curriculum
Corner

Ask
Coordinator

Rotation
Groups

Core

Inpatient
MICU
CCU
Cardiology
Hematology-Oncology
Gastroenterology
Nephrology
Pulmonology
Ambulatory

Electives

Anesthesia
Dermatology
Allergy and Immunology
PM&R
Psychiatry
Pain and Palliative Care
Orthopedics
Ophthalmology

Residency Program Overview Page

Space: SMML Internal Medicine | Trinity Health Uniting Community - Internet Explorer

https://uniting.trinity-h... Space: SMML Internal Me...

File Edit View Favorites Tools Help

Share Browser WebEx

home Combined GME Lect... Inbox (1,231) - debikellogg... Internal Medicine

None

Community

In this residency program, you will have the opportunity to learn from your faculty and fellow residents during each of your rotations. Find your rotation on the left hand side and join to start learning and sharing.

Find and join your rotation!

- AMBULATORY
- GERIATRICS
- HEMATOLOGY/ONCOLOGY
- INPATIENT
- MEDICAL INTENSIVE CARE UNIT

TEACHING FACULTY OF THE MONTH

Salim Hamadeh
Joined on Nov 13, 2014

Following: 8 Followers: 24

RESIDENT GROUPS

- SMML Internal Medicine Interns
- SMML Internal Medicine - Second Year Residents
- SMML Internal Medicine -

WELCOME TO INTERNAL MEDICINE!

DISCUSSION FORUM

- What quotes do you find that promote resilience and well-being?
- National Action Plan for Adverse Drug Event Prevention
- What are you doing to make sure you are aligning your education of the patient with their values in order to achieve a win win for improving their health and achieving outcomes?
- High Value and Cost Conscious are not at odds with each other.
- What books and resources can help me during the first year?

CENTER FOR ADVANCED PALLIATIVE CARE

Learn more about Palliative Care and gain CME at the Center for Advanced Palliative Care.

CATEGORIES

- ABIM & ACGME -

Slide 13 of 15 "Trinity Health PowerPoint Template"

75%

Rotation Page Design

PGY 1	PGY 2	PGY 3
Rotation Goals/Objectives	Rotation Goals/Objectives	Rotation Goals/Objectives
Pre-Test	Pre-Test	Pre-Test
Reading Assignments	Reading Assignments	Reading Assignments
Discussion Forum	Discussion Forum	Discussion Forum
Videos/TED Talks	Videos/TED Talks	Videos/TED Talks
Post-Test	Post-Test	Post-Test

Rotation Overview Pages

Group: SMMH MICU Rotation | Trinity Health Uniting Community - Internet Explorer

https://uniting.trinity-h... Group: SMMH MICU Rotat...

File Edit View Favorites Tools Help

Share Browser WebEx

home Combined GME Lect... Inbox (1,231) - debikellogg... Internal Medicine

Learn, Share, Collaborate.

SMMH MICU Rotation

Overview Content People **Projects** Calendar

Follow Join this group

Actions About Share

Go Back to SMMH Internal Medicine

ROTATION INFORMATION

Faculty:
Narendra Khanchandani, MD
Michael Garniao, MD
Mark Villeneuve, MD

Essential Info:
Senior ICU Resident 24/7 phone number: 62208
Intensivist 24/7 WebExchange Page: SMM ICU

WELCOME TO THE MICU AT ST. MARY MERCY LIVONIA

This is the learning community for the MICU rotation at St. Mary Mercy Livonia. The vision of the ICU rotation at St. Mary Mercy Hospital is to provide residents with an excellent background in critical care medicine. Graduates of our Internal Medicine residency program should be able to select appropriate, cost-effective testing, deliver high quality, safe patient care, and coordinate care with subspecialists on their critically ill patients.

To get started, view the Goals and Objectives for your program year, and then read the Read Me MICU.docx get started.

Your faculty lead is: Narendra Khanchandani, MD

ASK MICU ROTATION - ST. MARY MERCY LIVONIA

Type your question

Ask it

CONTENT

- Mechanical Ventilation
- Required Materials
- Supplemental Materials

NEW MEMBERS

- Jinu Puthenparampil
Joined Jul 30, 2015
- James Kruer
Joined Jul 29, 2015
- Lydia Espinoza
Joined Jul 27, 2015

View all members

FEATURED CONTENT

- Virtual Critical Care Rounds links

DISCUSSION FORUM

Start a discussion or ask a question
Brainstorm with co-workers, get your questions answered, build status with your responses.

https://uniting.trinity-health.org/groups/micu-rotation-group/places

Slide 13 of 16 "Trinity Health PowerPoint Template"

Start Internet Explorer Outlook Word PowerPoint

75%

Rotation Checklist and Assignments

Group: SMMH MICU Rotation | Trinity Health Uniting Community - Internet Explorer

https://uniting.trinity-h... Group: SMMH MICU Rotat...

File Edit View Favorites Tools Help

Share Browser WebEx

home Combined GME Lect... Inbox (1,231) - debikellogg... Internal Medicine

You will work through these activities to complete your rotation:

Activity	Location
1. Read rotation overview, goals and objectives and Read Me document	MICU Goals and Objectives
2. Review evaluation sheet for this rotation	MICU Evaluation.PDF
3. Review Critical Care Modules	Virtual Critical Care Rounds links
4. Learn about Sepsis <ul style="list-style-type: none"> Surviving Sepsis Sepsis Policy Criteria Cerner Order Set 	<ul style="list-style-type: none"> Severe sepsis.pdf Surviving Sepsis: Initial Resuscitation Table.pdf Surviving Sepsis: Hemodynamic Support Table.pdf
5. Review Procedures <ul style="list-style-type: none"> Central Venous Catheterization Arterial Line Thoracentesis Goal Directed Ultrasound 	<ul style="list-style-type: none"> NEJM Ultrasound-Guided Internal Jugular Vein Cannulation NEJM Placement of an Arterial Line NEJM Thoracentesis Ultrasound Cases
6. Ventilator Management	Coming soon...
7. Blood Pressure	Shock.pdf
8. Fluid Management	Myburgh fluids review.pdf
9. Electrolytes	Acid base disorders.pdf
10. Handover and transition of care in ICU	ICU handover format SBAR.pdf
11. End of Life	Dying with dignity 2014.pdf
12. Leading a Family Discussion	Coming soon...
13. Delivering Bad News	Video File How to Break Bad News.m4v

https://uniting.trinity-health.org/docs/DOC-8180

Page: 1 of 1 Words: 0

Start | Internet Explorer | File Explorer | Mail | Calendar | Word | PowerPoint

Questions

What questions do you have?